

Embrace the Future of Logistics with enVision 100S

A cost-effective static dimensioning solution
suitable for industrial and retail environments



enVision 100S Dimensioning System

- Fast Accurate Dimensioning: Every Time
- Compact, Versatile, Durable
- Certified Legal for Trade
- Easy Setup and Integration

PHD Solutions Inc.
435 Enfield Road, Burlington, ON
L7T2X5, Canada



enVision 100S Dimensioner

Reduce shipping costs. Increase billing accuracy

Accurately calculating shipping costs and ensuring precise billing can present significant challenges for organizations operating low-density parcel environments. Determining parcel measurements manually is time consuming and prone to costly human error.

The enVision Dimensioning System offers the ideal solution for low-density parcel environments, providing reliable and accurate shipping calculations. Fully certified Legal for Trade in Canada, enVision offers a hassle-free setup with industry-leading accuracy.



Accurate Shipping Charge Calculations:

Both Carriers and Shippers can use enVision to obtain precise measurements of parcels.



Enhanced Billing Accuracy:

Correct parcel measurements from enVision can be used to calculate accurate shipping rates, avoiding lost revenue due to under measuring.



Data-Driven Decision Making:

The measurement data captured by enVision is easily and seamlessly integrated into shipping, tracking, rate shopping and billing systems.

Challenges in Parcel Dimensioning



“ *Manually measuring parcels can be time-consuming and error-prone* ”

Inaccurate or Missing Measurements:

When parcel measurements are absent or captured inaccurately due to inconsistent manual processes, it can result in incorrect billing values which directly affect your bottom line.

Solution:

enVision is a user-friendly, automated dimensioning solution that delivers consistent and accurate parcel measurements at rates of up to 400 pieces per hour. By eliminating the need for manual measurements and reducing human errors, this solution ensures accurate calculation of shipping costs and more efficient use of resources. enVision seamlessly integrates into upstream Shipping, Billing and Parcel Tracking systems to ensure accurate measurement data is flowing to your core business platforms.

Billing Disputes

Without accurate measurement data, resolving billing disputes can be difficult due to a lack of evidence for a given shipment's dimensions and weight. This can lead to lost revenue and inefficient use of staff resources.

Solution:

When used with enVision Connect, enVision can associate a parcel tracking number with dimensions and weight, along with a color image of the parcel. enVision ensures you are fully equipped to resolve disputes quickly and objectively.

“*The ability to swiftly access information can significantly impact business outcomes.*”

Lag to Timely Information

When used with enVision Connect, enVision can associate a parcel tracking number with dimensions and weight, along with a color image of the parcel. enVision ensures you are fully equipped to resolve disputes quickly and objectively.

Solution:

With enVision Connect and enVision Cloud, measurement data captured by enVision devices is available instantly through a web-based portal and API, enabling fast process optimization and decision-making opportunities.

Simple, Efficient Dimensioning

Designed to Fit Where You Need It

Introducing the enVision 100S Dimensioning System by PHD Solutions - the perfect choice for organizations seeking an efficient dimensioning solution.



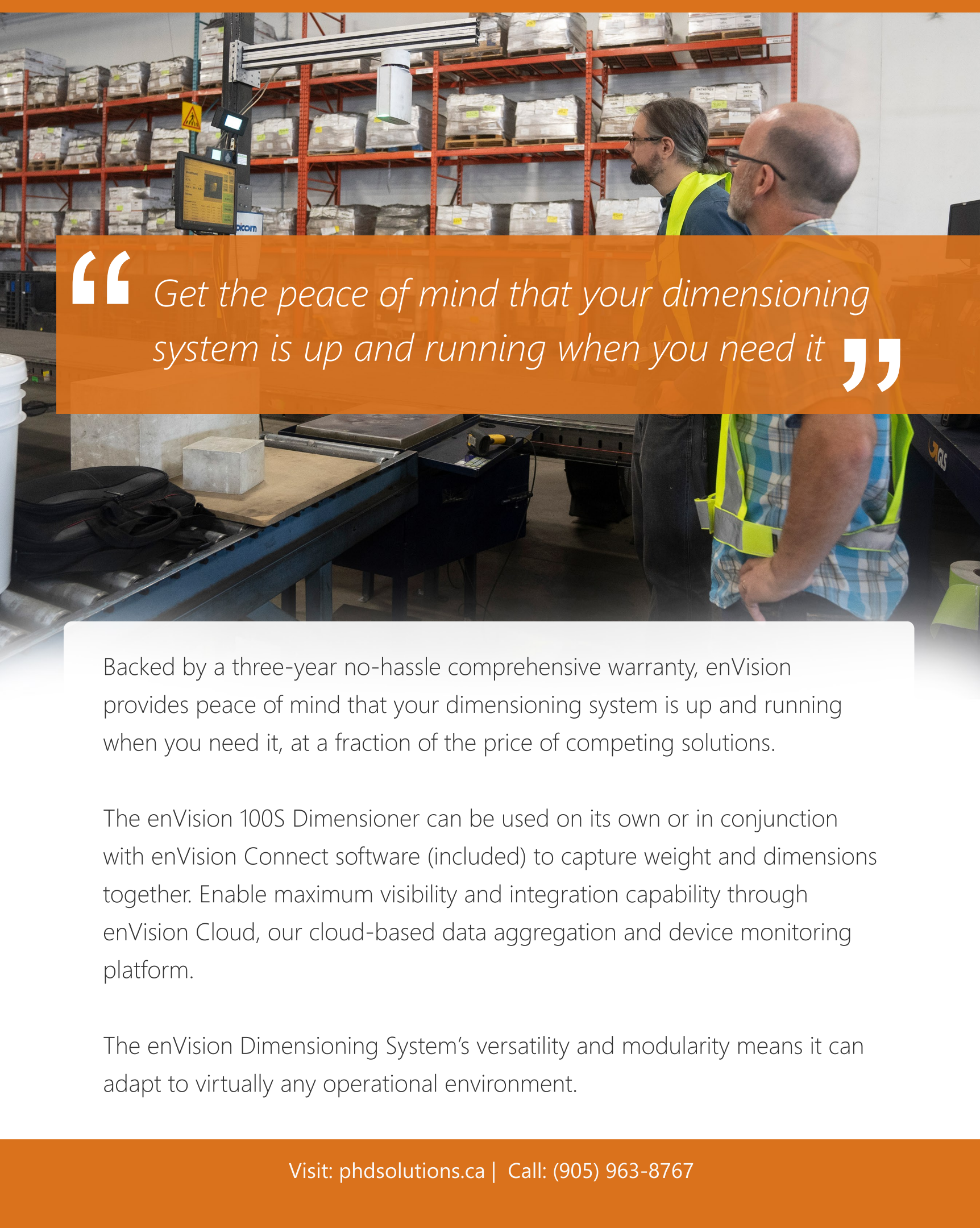
Certified by Measurement Canada, this system is thoughtfully designed to meet the demands of companies who require fast, accurate dimensioning and a quick return on investment. who value ease of installation and a quick return on investment.

enVision enables seamless data integration into virtually any operational workflow. Its compact and versatile build allows it to adapt to various spatial configurations.

This versatility means minimal disruption to your operation, allowing you to focus on improving efficiency.

* mounting system pictured for illustration purposes only. Contact sales for mounting options

Visit: phdsolutions.ca | Call: (905) 963-8767



“ Get the peace of mind that your dimensioning system is up and running when you need it ”

Backed by a three-year no-hassle comprehensive warranty, enVision provides peace of mind that your dimensioning system is up and running when you need it, at a fraction of the price of competing solutions.

The enVision 100S Dimensioner can be used on its own or in conjunction with enVision Connect software (included) to capture weight and dimensions together. Enable maximum visibility and integration capability through enVision Cloud, our cloud-based data aggregation and device monitoring platform.

The enVision Dimensioning System's versatility and modularity means it can adapt to virtually any operational environment.

Size and Weight in One Place

Our enVision Connect software is included with each hardware purchase. It combines enVision dimensioning with a weigh scale* and a barcode hand-scanner* to enable parcel weighing/reweighing operations at speeds of up to 400 pieces per hour.

enVision Connect has been carefully crafted to facilitate an easy-to-use experience that provides maximum efficiency with minimal interaction required.

Results can be automatically and securely synchronized to a centralized repository called enVision Cloud for easy access and integration. Alternatively, results can be exported to an easy to consume format to make integration simple.

Unleash Maximum Throughput

Increase throughput rates even further with our hands-free barcode scanning solution

utilizing a Cognex high-speed imager. Simply place a parcel on the scale and it is weighed and dimensioned in less than 1 second.

* contact sales for supported weigh scales and scanners



Technical Specifications

Capabilities

Accuracy (Cuboidals)	0.5 cm (0.2 in)
Accuracy (Non-Cuboidals)	1.0 cm (0.5 in)
Maximum Object Size	92 x 60 x 60 cm (36 x 24 x 24 in)
Minimum Object Size	6.0 x 6.0 x 6.0 cm (2.4 x 2.4 x 2.4 in)
Measuring Surface (without weigh scale)	Virtually any flat, opaque, non-reflective surface
Measuring Surface (with weigh scale)	Supports platter-top and roller-top scales

Measurement

Measurement Time	400-700ms
Stand off Height	

Product Dimensions and Weight

Physical Dimensions	17.0 x 10.4 x 26.0 cm (6.7 x 4.0 x 10.2 in)
Weight	2.0 kg (4.4 lbs)

Power Requirements

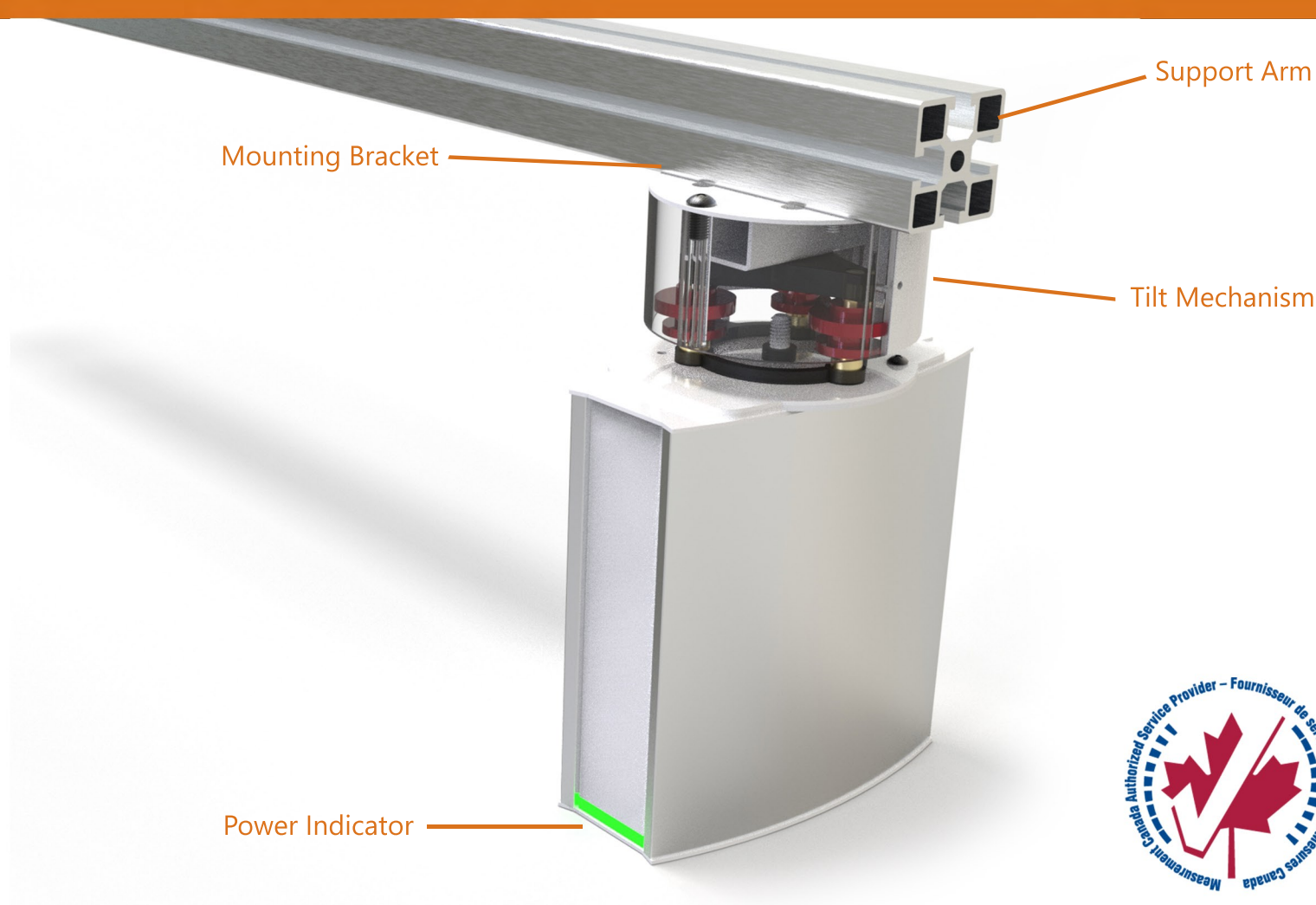
Power Supply	110-240V Universal Power Supply
Power Draw	12V DC / 5A

Display

Indicator	4 Line Monochrome LCD
-----------	-----------------------

Interface Connectivity

Connectors	1x RJ45 Ethernet
Host Protocols	HTTP REST API



Operating Environment

Environment	Avoid direct sunlight and bright overhead lighting
Operating Temperature	10° to 40° C (50° to 104° F)

Mounting

Compatibility	Compatible with aluminum extrusion 45 x 45 or 45 x 90 profiles. Alternatively, any system with appropriate mount points can be used
---------------	--

Indicators

Indicator	4 Line Monochrome LCD
-----------	-----------------------

Certifications

Approvals	Measurement Canada (Cuboidals)
-----------	--------------------------------

“

PHD Solutions guarantees a smooth and quick device setup on every one of your device purchases.

”

Our Services

Recognizing that not all environments look the same, PHD Solutions offers a range of services to assist with onboarding, integration and more.

Our seasoned team of technical and operational experts are ready to work with your stakeholders to ensure a smooth enVision transition.

enVision devices are designed to be set up and collecting data in just hours, not weeks. We also offer software services designed to enhance and complement your new devices, ensuring that you are fully equipped to unleash the power of PHD Solutions' technology.



Onboarding

Allow PHD Solutions to onboard you with ease. With any device purchase we'll work with you to ensure smooth installation and setup, so you can start realizing ROI sooner.



Hands-Free Scanning Solutions

Leverage our strategic partnerships with industry leaders like Cognex and Zebra. Our collaboration delivers hands-free barcode scanning solutions that boost productivity and efficiency.



Data Integration

Expand your development team's capabilities with PHD Solutions, enabling you to meet operational demands.



Warranty

Trust PHD Solutions with our three-year warranty and easy replacement policy. Rest easy knowing that we are dedicated to safeguarding and maintaining your investment.

“ *Fast, accurate, and reliable
dimensioning for smart carriers.* ”



PHD Solutions Inc.
435 Enfield Road,
Burlington, ON
L7T2X5, Canada

Call: (905) 963-8767
Visit: phdsolutions.ca